



The Reflector

Volume 72, Issue 1

SEPTEMBER 2019



DELAWARE PHOTOGRAPHIC SOCIETY, ONE OF THE NATION'S OLDEST, MOST RESPECTED CAMERA CLUBS.



"Help Me" by

JERRY AM ENDE

Grand Champion

Ward Museum Art in Nature Photo Festival

BOARD OF DIRECTORS 2019-2020

President — PETE CURCIO
302.540.2231 / pvcurio@comcast.net

Vice President — SUSAN PETER
302.354.1921
johnandsusanpeter@gmail.com

Treasurer — BOB HANSON
302.455.1622
firstfoxfire@verizon.net

**Recording Secretary and
Corporate Secretary** —
CYNTHIA BONNES 302.824.2474
cynbonn76@gmail.com

Education Director —
DAVID SHOEMAKER
302.798.9175
rumpleschnitz@gmail.com

Projected Image Director —
JOHN POWELL
302.528.1539 / johnpow2@comcast.net

Print Director — KARL LECK
610.388.0298 / karleck@verizon.net

Programs Co-Director —
MARGARET HENNES
484.678.0869
hennesgm@gmail.com

Programs Co-Director —
TARA DOUGHERTY
610.570.4423
taradough@icloud.com

IT Director — PETER FORSTER
302.598.3632 / peter@forster.us

WIEP Exhibition Co-Chair —
LARRY HINSON
302.762.7453 / hinson310@aol.com

WIEP Exhibition Co-Chair —
PATRICK LITTLE
302.598.2322 / pal@who.net

Reflector Editor — THERESA YANICK
302.276.4925 / tmyanick@comcast.net

Membership Chair —
BILL GUENTHNER 302.239.8303
bguenthner@verizon.net

Field Trips Chair — TOM LOVATT
610.220.9032
pubtext@yahoo.com

Equipment Chair —
GARY ALTOONIAN 610.931.9506
garyaltoonian@gmail.com

Publicity Chair — CAROLE CLARKE
610.358.5191 / cnclarke@aol.com

Judges Chair — JUDITH LESNAW
302.762.5916 / judith.lesnaw@uky.edu

Past President — FRED CULLIS
302.584.0434 / fcullis@verizon.net

OTHER CONTACTS

Monthly Hospitality Chair —
JUDY BROWN
610.485.5150 / pixieb40@aol.com

Standards Committee Chair —
TOM LOVATT 610.220.9032
pubtext@yahoo.com

DPS Webmaster — RICH LIETZKE
302.234.3066
webmaster@dpsphoto.org

The Delaware Camera Club (DCC) was established January 28, 1931. DCC is a charter member of the Photographic Society of America and The Delaware Valley Council of Camera Clubs. In 2002 the name was changed to the Delaware Photographic Society (DPS) and the Society became a tax deductible educational organization.

IN THIS ISSUE...

President's Message	3	Can You Live With Just One Camera Bag?	
The 2019-2020		by RICK MILILLO	20
Board Members	4	Guidelines for Judging	21
Member News	5-7	Projected Image Rules for 2019-2020	22-23
RAD DREW Workshop		Print Image Rules for 2019-2020	24-25
"Creating Stunning Images with Your iPhone"	7	Fort Delaware Field Trip	26-27
IT Updates	8	Marshall Steam Museum and Auburn Heights Field Trips	28-29
Exhibit Updates	9	Members Gallery, Summer Activities	30-35
Service Awards and Commendations	12-13		
PSA Results	14-15		
Meet Our Member, ANN SAGEL	16-17		
It's Worth a Photo Stop, Old Car City, Georgia			
by KARL LECK	18-19		

CALENDAR

- **September 9**
Orientation Meeting
- **September 16**
Projected Image Competition
- **September 23**
Print Competition
- **September 30**
Understanding PSA Interclub Competitions
- **October 7**
Education: The Art of Photography. A brief history of the medium and tips for elevating your images.
- **October 14**
Projected Image Competition
- **October 21**
Print Competition
- **October 28**
RAD DREW Workshop
8:00 am – 4:00 pm
6:00 pm – **Program Night**
Dinner with Speaker
7:30 pm – RAD DREW, Indianapolis, IN
Seriously?! Your Mobile's Camera?! Why it's Worthy of Your Camera Bag
Cokesbury Auditorium Level C

SEPTEMBER'S ASSIGNED SUBJECT – *Automobile Detail*

Part of an automobile.

WELCOME NEW MEMBERS

Who recently joined the **Delaware Photographic Society**: VIRGINIA APOSTOLACIS, SARAH CLAREHART, KEN DAVIS, ERIC DUNFORD, MARY LOESSNER, JAQUELINE WHALEN.

~ BILL GUENTHNER, Membership Chair, bguenthner@verizon.net

President's Message

As we enter a new year at the **Delaware Photographic Society** I am proud and honored to be the new *President* of this prestigious group. This is our 88th year which makes the Delaware Photographic Society one of the oldest camera clubs in America. A special thanks to the leadership that has gone before me with FRED CULLIS and BOB MCCAFFREY at the helm. Through their guidance we have a great foundation for the future of DPS.

As you may recall, last year we received a grant from the Longwood Foundation. This generous gift has enabled DPS to update equipment, improve competitions and changed the look and feel surrounding our website. These are changes that can be enjoyed by every DPS member in addition to benefitting the photographic community of which we serve.

As we enter the new year, our first meeting is designed to bring everyone up-to-date on the many opportunities that

DPS has to offer our membership in the year ahead. The meeting will include updates on our education and speakers series, competitions, field trips, the Wilmington International Exhibition of Photography (WIEP), our new website and many other opportunities for members and the community.

You will also get a chance to meet the people who volunteer their time and talents to make the Delaware Photographic Society one of the premier photography groups in the country.

Please plan to join us for our first meeting on September 9. We look forward to your participation and to expanding your world of photography.

All the best,
~ PETE CURCIO, *President*



2019-2020 Membership Dues are Due

Please pay your \$45 membership dues if you haven't already paid them. You can pay on-line (safe, fast, preferred) via our **DPS Members site** or you can mail your check payable to **DELAWARE PHOTOGRAPHIC SOCIETY** to BILL GUENTHNER at 18 Kenwick Road, Hockessin, DE 19707. Year 2019-2020

dues must be paid in order to enter competitions. If you became a member between February 1, 2019 and June 30, 2019, your renewal will not be due until July 2020.

~ BILL GUENTHNER,
Membership Chair,
bguenthner@verizon.net

FIRST MEETING of the 2019-2020 DPS Year

Please join us on Monday, September 9 at 7:30PM. At this meeting you will learn information that is helpful to all members but especially useful to new members. Some of the basics of club membership will be explained, including image sizing, entry process, rule changes, print requirements, field trips and other topics. The Standards Committee will be available to explain the competition classes. They will also evaluate work brought in by new members if they wish to enter a class other than Class B. Please bring several

prints or digital images on a thumb drive that are examples of your work if you wish to be evaluated by the Standards Committee. We will review what's going on with IT – and how to navigate our Members' site. Our *Membership Chair*, BILL GUENTHNER, will be available to answer your questions, or to renew your membership for the year. This is also a great opportunity for you to ask any questions you may have concerning the club. Light refreshments will be available starting at 7:00PM.

THUMBNAILS

- Education Night is held the first Monday of the month at 7:30pm.
- Competition nights are held on the second and third Mondays at 7:30pm.
- Program night is the last Monday of the month October — March (no program in December) at 7:30pm.
- Location: duPont Pavilion, Cokesbury Village, 726 Loveville Rd, Hockessin, DE 19707

Guest speaker programs are presented in the Cokesbury auditorium on Level C

- Membership dues may be paid via PayPal on the DPS or Members websites or send a check payable to the Delaware Photographic Society to:

Membership Chair
WILLIAM GUENTHNER
18 Kenwick Rd.
Hockessin, DE 19707

Member Dues: \$45

- **The Reflector** is published by the Delaware Photographic Society. Material may not be reproduced without written permission.

Please send announcements or articles to THERESA YANICK at tmyanick@comcast.net

- Members are encouraged to participate in the Yahoo group, **DPSExchange@yahoogroups.com**
- Visit our Website at: www.dpsphoto.org



Delaware Division of the Arts

This organization is supported, in part, by a grant from the [Delaware Division of the Arts](http://www.delawarescene.com), a state agency, in partnership with the [National Endowment for the Arts](http://www.nationalendowmentforthearts.gov). The Division promotes Delaware arts events on www.delawarescene.com.

2019-2020 Board Members



PETE CURCIO
President



FRED CULLIS
Past President



SUSAN PETER
Vice President



BOB HANSON
Treasurer



CYNTHIA BONNES
Recording Secretary



JOHN POWELL
Projected Image Director



KARL LECK
Print Director



DAVID SHOEMAKER
Education Director



MARGARET HENNES
Program Co-Director



TARA DOUGHERTY
Program Co-Director



PETER FORSTER
IT Director



LARRY HINSON
*WIEP Exhibition
Co-Chair*



PATRICK LITTLE
*WIEP Exhibition
Co-Chair*



THERESA YANICK
The Reflector Editor



BILL GUENTNER
Membership Chair



GARY ALTOONIAN
Equipment Chair



TOM LOVATT
Field Trips Chair



CAROLE CLARKE
Publicity Chair



JUDITH LESNAW
Judges Chair

Free Class for Beginning Digital Photographers

“Everything you Wanted to Know About Digital Photography but Were Afraid to Ask”



Again this year DPS will present a free 10-week course for those new to Digital Photography. The course is designed for beginning photographers who wish to learn how to take control of the camera, and use its many functions for creative effect.

Among topics to be discussed will be: how a camera works, all about lenses, using shooting modes, effects of shutter speed, aperture and ISO, basic composition, basic post-processing, and lighting. Students will be expected to complete basic homework assignments which will be reviewed each week.

The course will begin on Tuesday, October 8 and run for 10 weeks. There will be no class Thanksgiving Week (Nov. 26). Classes will be held in the Longwood Room of the Claymont Community Center, 3301 Green Street, Claymont, DE. Sessions will start promptly at 7:00 PM and end at 8:30 PM.

Instruction will be through discussion, Power Point presentations, and “hands on” demonstrations. The course will be taught by four DPS Salon class members: MARVIN GERSTEIN, LARRY HINSON, BOB MCCAFFREY and GARY WALTER.

Registration is open to all DPS members, as well as the general public, so please tell your friends. A sign up sheet will be available at all DPS September meetings, or you can register by sending an email to photoclass@dpsphoto.org. Please include your phone number in the email.

Students must have a camera with interchangeable lenses (you don’t need more than one lens) such as a DSLR or mirrorless camera. Certain other cameras which have full controls for manual exposure may also be acceptable if approved by the instructors. **If you have questions or need more information, send an email to photoclass@dpsphoto.org, or see one of the instructors at a DPS meeting.**

2019-2020 DPS Education Night Topics

I am working on finalizing this year’s education calendar. I have selected the topics listed below for the monthly Education Night programs but I am still looking for volunteers to help me present these topics. Any member who feels that they are qualified to talk about a subject is invited to contact me at rumpleschnitz@gmail.com to discuss these opportunities. It is a great way for new members to increase their visibility in the club and to help other members improve their photographs!

I am trying to incorporate more hands-on learning opportunities, both in the Education Nights and by scheduling a quarterly one-day workshop to cover topics in greater depth than the Education night allows. Here are the topics for the 2019-2020 Club Year:

- **OCTOBER 7, 2019:** The Art of Photography—A brief history of the medium and tips for elevating your images
- **NOVEMBER 4, 2019:** Preserving Family moments: tips for posing groups and taking candid shots
- **DECEMBER 2, 2019:** Night Light—Shooting after dark
- **JANUARY 6, 2020:** Skills Bazaar 1—a hands on training event

- **FEBRUARY 3, 2020:** Thinking in Black and White—Monochrome photography
- **MARCH 2, 2020:** A Walk on the Wild Side: nature photography
- **APRIL 6, 2020:** “I don’t think we’re in Kansas anymore...” tips for travel photography
- **MAY 4, 2020:** Skills Bazaar 2—a hands on training event

ADDITIONAL WORKSHOPS

- Fall (TBD): Photo Editing basics, a one-day, hands-on training event
- Winter (TBD): Photo Show Essentials—putting your first show together
- Spring (TBD): Getting Creative—Using your imagination and your camera together
- Summer (TBD): The Craft of Printing—Producing images from Pre-Visualization to Mounted Image yourself

Please let me know if there are any other topics you would like to see covered in the future!

~ DAVID SHOEMAKER, *Education Director*

2019-2020 Program Night, Guest Speakers

We are excited to announce this year's line-up of guest speakers. Please mark your calendar for these inspiring programs! Evening Program Nights are scheduled in Cokesbury Auditorium C at 7:30PM. **Programs are free and open to the public.**

- **OCTOBER 28, 2019**
RAD DREW, Indianapolis, IN
Seriously?! Your Mobile's Camera?! Why it's Worthy of your Camera Bag
 - **NOVEMBER 25, 2019**
JOE and MARY ANN McDONALD, McClure, PA
"I've Been Hit": Adventures and Stories from 30 Years in the Bush
 - **JANUARY 27, 2020**
RICK SAMMON, Winston Salem, NC
Canon Explorer of Light
Topic to be Announced
 - **FEBRUARY 9, 2020** (Sunday afternoon),
WIEP JUDGES MALCOLM JENKIN, GMPA and
BARBARA JENKIN, GMPA AND BPSA,
United Kingdom
Our Journey Through Portraiture
 - **MARCH 23, 2020**
DAVID AKOUBIAN, Georgia
Tamron
Topic to be Announced
- Note:** Before each program a *Dinner with the Speaker* is held which provides an opportunity to chat with the speaker and other DPS members in a congenial, informal setting. Dinner with the Speaker is at 6:00PM in the Cokesbury main dining room. Advance reservations are required and the cost is \$20.00.

Assigned Subjects 2020-2021

A new requirement for Assigned Subjects beginning September 2019 requests the member to specify the capture date of each image entered. The date appears in the image metadata. The date is only correct if the photographer has entered the correct date/time setting in the camera. Everyone should check their cameras to be sure that the date/time are set accurately so they have a ready reference when considering an image for Assigned Subject entry.

2020-2021 ASSIGNED SUBJECTS *Images must be made after August 12, 2019.*

- **SEPTEMBER 2020:** BIG SKY (Landscape scene with prominent or dramatic sky)
- **OCTOBER 2020:** CRAFTSPERSON AT WORK (Image showing something being made by a person with expertise)
- **NOVEMBER 2020:** COLOR CONTRAST (Image showing different colors that enhance theme)
- **JANUARY 2021:** SEEDS (Plant seeds)
- **FEBRUARY 2021:** PLATED MEAL (Ready to eat food on a plate)
- **MARCH 2021:** MY BIG TOE (Interesting selfie of the photographer's big toe (homage to the late Bill Talarowski)
- **APRIL 2021:** WATERFALL (Liquid water falling or flowing down in natural setting)

New DPS Craftsman Class Announced

The 2019-2020 Print Competition rules show a new Craftsman Class for those who make their prints themselves. Any member may join this Class regardless of their previously assigned class. The member must do all the work from image capture through the final mounted print for presentation. It's voluntary and not regulated by the Standards Committee. 16x20 is the maximum image/mount size, and the member must be in the class all year so there will be no bookkeeping problems (e.g. a member can't bounce back to Class B if they find Craftsman Class

too challenging). A member cannot be in two classes in any year. Members who print and mount your own images and have been successful in monthly competitions should give it consideration. Alternatively, you can remain in your current class. **Please notify the Print Director, KARL LECK, karleck@verizon.net or leave a message at 610-388-0298 and submit your print titles on the website in Craftsman Class if you wish to join this class combining both the art and craft of photographic print making for the 2019-2020 year.**

▶ One Day Seminar with RAD DREW, Monday, October 28, 2019

“Creating Stunning Images with Your iPhone”

Monday, October 28, 2019

8:00am to 4:00pm

Cokesbury Media Room

Cokesbury Village

Cost: \$140.00 per person (limit 25 participants)

Today's iPhone camera is a dynamic powerhouse for recording images that are at times indistinguishable from images created with more traditional “big” cameras. And, the computing power that fits in the palm of a hand allows us to edit and stylize those images from anywhere.

In this workshop Rad Drew will share and demonstrate some of his favorite apps, processes, and techniques for creating a variety of images from “straight” landscapes, to beautiful portraits, to highly stylized black and white, vintage, or painterly images. He will share his workflow and demonstrate how he uses these apps to achieve various results.

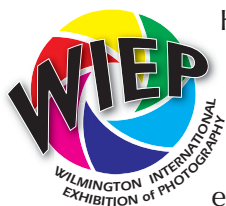
You will learn to explore the iPhone's powerful and versatile native camera and its features including Live Mode, Portrait Mode, Burst, and Panorama. He will discuss shooting and processing RAW and he will introduce you to the best RAW processing options for mobile available today. You'll apply new skills and try new apps as you complete an assignment over our lunch break which we'll

debrief as a group. Rad will share his experience with lens accessories, batteries, tripods, cases and more. As part of the workshop, he will introduce you to some Topaz Labs desktop software tools that are especially useful for eliminating noise from iPhone images and increasing the size of images for printing larger with integrity.

Registrants will receive an app list to download prior to class (\$10-\$20 maximum in the App Store depending on which version of apps you purchase). TO REGISTER, head to Rad Drew's website at <http://www.raddrewphotography.com/p/seriously-your-mobile-camera.html> where you can use a credit card or your PayPal account to sign up and pay for this workshop.



▶ WIEP 2020



Hello Everyone! Believe it or not, plans and preparations are underway for the **2020 Wilmington International Exhibition of Photography (WIEP)**. The 2020 WIEP will be open for entries on Friday, November 1, 2019, so everyone needs to start thinking about what images you'll want to enter for the competition. For your information, here are more critical dates:

Monday January 27, 2020 – WIEP Entry deadline

Friday February 7, 2020 – Cokesbury Setup

Saturday February 8, 2020 – WIEP Judging

WIEP Exhibition days – March 15, March 22

We also need some critical positions to be filled; WIEP Webmaster, Projected Image Chair, and WIEP Event Photographer.

For the new photographers in the club, historically DPS members have done exceptionally well in WIEP earning many acceptances and top awards. And in the past few years, DPS members have even earned several Best in Show awards! So don't be shy! Enter your best images!

Remember this is a PSA sanctioned event, and as long as you're a PSA member, your acceptances go towards your star path.

~ LARRY HINSON & PATRICK LITLE,
WIEP Exhibition Co-Chairs

COMPETITION NIGHT REFRESHMENTS – Refreshments are available on competition nights. Anyone who likes to bake or wants to buy something to bring on competition nights (like cookies, cake, various snacks) are very welcome to bring them! **If you have questions, please contact me at Pixieb40@aol.com.** Here's to a successful year of competition wins and great refreshments for all. ~ JUDY BROWN, Hospitality Chair

► Update From IT: Changes Are Coming! (And Help Is Needed!)

Those of you who have attended last year's competition nights have probably already heard about the fact that we are replacing the competition software with a newer product that will eliminate some of the problems we've had in the past. Well, we're actually doing much more: we have purchased new equipment (competition laptops, projectors and more; details in a separate article), and we're practically replacing almost everything (but not all at once) by migrating to a software that integrates the various functions our club needs. The software is called Visual Pursuits and is being used by over 100 clubs, offering many advantages. Here is what we are doing:

NEW: MEMBERSHIP MANAGEMENT SOFTWARE

At the core of the new system is an integrated club membership management module that keeps track of memberships, expirations, sign-ups and renewals, members' competition classes, etc.

WHAT IT MEANS TO YOU: We have migrated all of our members into the new system, everything except the passwords. You will soon receive an email from me, *Peter Forster (Delaware Photographic Society)* <NoReply@SoftwarePursuits.com> with the Subject: "Your Delaware Photographic Society website password has been reset". This email will provide you with a link to sign into the new system and a temporary password to login. If you are also a member of one of the 100+ clubs already using the software, you will find your information here as well. Once you have successfully logged in, please take a moment to review and update your address and other information, and feel free to look around on the new site (but note: there's not much there, yet!)

NEW: COMPETITION ENTRY AND RUNNING THE COMPETITIONS

The new system provides a new way of setting up competitions, submitting entries to competitions, and running the competitions. Details for how to enter competitions will be sent out via email and a demo will be presented at the first membership meeting on September 9.

WHAT IT MEANS TO YOU: The new system allows you to upload your images for entries into competition into your own storage or library, and you select and submit images for competitions from that library. The new system will keep a record of all your competition entries and their scores, and will make it much easier to have your accepted entries entered into end-of-year competitions. Results will be available immediately after the competition.

NEW: WEB SITE CHANGES

The new system also provides its own set of web pages and can house the public and member web sites, but it will be an incremental process to migrate all of our web pages over a period of time. We do need to migrate the member web site as it is being managed using Adobe Muse, which will no longer be supported by Adobe in the future.

WHAT IT MEANS TO YOU: The current public and member web sites will continue to exist, but individual pages (such as for membership renewals and competitions) will be on the new system, and links will be updated in the old system to point to the new pages. We will do our best to make this migration as smooth as possible, but it is possible that not everything will always work as expected during this transition. You will recognize pages in the new system by the fact that they will have a look and color scheme different from the old web site(s). Depending on how much help we can get, this may take a while to be completed.

HELP NEEDED! We need help migrating the member web site into the new system. The club depends on volunteers to keep things running, and this is a great opportunity to help! If you are a web designer or familiar with creating and maintaining web sites, and would like to get involved, we would love to get your help! **Please contact me at itdirector@dpsphoto.org.**

As you can see, lots of changes are coming! As with most changes, they require us to adapt and get used to new ways of looking at things or doing what we were used to in a new way. AND, things sometimes don't work as they should right away, or as expected. I am sure we'll encounter some hiccups along the way (we'll try not to, but have you ever really been able to keep a hiccup from happening? Hold your breath!). Our *Membership Chair* BILL GUENTHNER and MARK LIEBERMAN are busy preparing the new membership database, our treasurer BOB HANSON is preparing the PayPal aspects, our public web site admin RICH LIETZKE is looking at migrating that site, CAROLE CLARKE is working on the events calendar in the new system – there are a lot of people working on this behind the scenes. All of us are doing this as volunteers, so please be patient and understanding as we move to this new system that will provide many opportunities for future enhancements to the way we run our club and our competitions! If you have any questions or run into any problems, please feel free to contact me at itdirector@dpsphoto.org.

~PETER FORSTER, *DPS IT Director*

Exhibit News

The current DPS exhibit at the **Delaware Museum of Natural History (DMNH)** is *“Wicked Plants.”* This exhibit coordinates with the traveling exhibit of the same name. The exhibit was hung on June 12 and will be on display through mid October.

DPS photographers in the exhibit are: MICHELLE BUTLER, SUSAN HENDRICH, VIRGINIA HERTZENBERG, BILL HILL, KATIE MCHENRY, KARL LECK, MARK LIEBERMAN, HEATHER REES and LEWIS WARE.

VIRGINIA HERTZENBERG's image *“Don't Eat the Berries”* appears on the cover of the Summer Edition of the Museum's publication *“Discovery.”*

The previous exhibit, *“Animal Architects”* was moved to the **DuPont Environmental Education Center (DEEC)** at the Riverfront, where it will be displayed until early October.

In conjunction with their 10th anniversary DEEC has asked us to provide an exhibit of images taken at the DEEC over the 10 years. A festival commemorating the anniversary will be held October 13.

The next DMNH Exhibit will be *“Migrating Waterfowl.”* As a heads up the Winter exhibit (January) will be butterflies, especially Monarch butterflies. Details are still to be determined.

A call for entries for both the DMNH *“Migrating Waterfowl”* exhibit and the DEEC 10th anniversary exhibit have been sent by blanket email. **Digital entries are due by September 27 for DMNH and September 20 for DEEC.**

If you have any questions please send an email to dmnh@dpsphoto.org for the museum's exhibit and to deec@dpsphoto.org for the DEEC exhibit.

Traveling Nature Exhibits

DPS exhibits periodically at the **Delaware Nature Society's Delaware Environmental Education Center (DEEC)** at the Wilmington Riverfront.

Recently at the end of the DPS exhibits at the Museum of Natural History, the prints travel to DEEC. This is an excellent arrangement since these two organizations share and communicate an appreciation for nature and

wildlife. Club members' return-on-effort is enhanced with their images being enjoyed at two exhibits, locations, and audiences.

Curators at each exhibit hold club members' nature images in very high regard. BOB MCCAFFREY and ROB TUTTLE coordinate the traveling nature exhibits.

Longwood Gardens and Tower Hill School Exhibit plans

Our current summer exhibit in the **Longwood Gardens Visitor Center** will be removed after September 29. Be sure to see this exhibit and photograph summer scenes at Longwood to prepare for next year's exhibit.

We will have a **Fall Color and Chrysanthemum Festival** exhibit at Longwood from October 3 to November 17. Members may enter up to six matted prints for this exhibit by Monday, September 23. Give your matted prints to KARL LECK karleck@verizon.net or JANE STROBACH jstrobach@yahoo.com at a DPS meeting. Subject matter can include fall colors in the gardens and lots of chrysanthemums. Color prints should be mounted on mat or foam board and

have a pure white overmat with 12"x16" opening. Images should be printed slightly larger than 12x16 so that paper around the image area does not show when matted. Your name, print title, and contact information (phone, email) must appear on the back of the mount board. Longwood staff will select the prints for the exhibit. Selected prints will be framed in DPS gallery frames.

An exhibit in the **duPont Arts Building at Tower Hill School** is being planned for January 2020. Stay tuned for details on the theme. Members can submit framed prints at least 8x10 with no maximum size limit for this exhibit.

Helen Graham Cancer Center Rotating Exhibit

The Delaware Photographic Society sponsors a rotating exhibit in the **Helen Graham Cancer Center Library**. It is a small installation consisting of 5 images that changes approximately every three months.

The images should be of an uplifting composition suitable for this location and all on a theme. In the past subjects have included lighthouses, fireworks, seascapes, star trails, birds, travel photos, rodeo, wildlife, tall ships, stained glass windows and rainbows.

Images must be mounted and matted (black) to fit the clubs 16 x 20 frames. Most images are 12x16, but other sizes could be acceptable.

GARY WALTER has been managing this installation since 2014, but it has been in existence prior to that time.

If you are a photographer who prints and would like to contribute images for this wonderful location, please let Gary know by email at oboegary@rootbeertogo.com.

2019 Service Awards

The Awards Committee, consisting of JERRY AM ENDE, ESTHER STEFFENS and myself decided, for the club year 2019, to award the commendations and service medals listed below. I want to thank Jerry and Esther for their efforts and for their input towards identifying club members who have made significant contributions to DPS during the year. I also want to thank CAROLE CLARKE, LYNN MANISCALCO, CINDY MCCAFFREY, KARL LECK and others for their recommendations.

According to the DPS Bylaws, http://www.dpsphoto.org/flyers/dpsbylaws_final2012018.pdf, there are eligibility requirements for all service awards except Commendation Certificates. Thus, there may be club members who made excellent contributions in 2019 but are not eligible for service medals this year.

COMMENDATIONS:

FRED CULLIS, PETE CURCIO AND SUSAN HENDRICH were instrumental in obtaining a substantial Longwood Foundation grant for the Delaware Photographic Society by preparing the 20-page application and by participating in numerous meetings and planning sessions. This grant has greatly assisted DPS in updating its technology infrastructure and equipping DPS with much-needed supplies and resources that help to fulfill the DPS mission of promoting photography.

ROSE LESAGE is recognized for providing invaluable service as substitute IT Director when the appointed IT Director was unable to serve out the year in that capacity. Rose selflessly lent her expertise and energy to the Society at a time when it was suddenly left without a functioning IT capability.

PATRICK LITTLE is recognized for producing the Wilmington International Exhibition of Photography Digital Show for the last two years and for providing significant and effective assistance to the DPS Equipment Chair.

DAVID SHOEMAKER is recognized for serving in an exceptionally competent and diligent manner as DPS Photo Show Chair. Additionally, during the past year, he has stepped in and taken over the position of Education Chair when the current Education Chair left the club midyear.

SERVICE MEDALS:

SUSAN HENDRICH (**bronze**) has energetically and enthusiastically served DPS as Program Co-Director, Program Director and Projected-Image Chair for the 2018 Wilmington International Exhibition of Photography. In addition, Susan was responsible for the 2018 and 2019 WIEP banquet programs and reservations.

JUDITH LESNAW (**bronze**) has served DPS as Judges Chair with great enthusiasm, a difficult and time-consuming responsibility involving the recruiting of some 56 judges per competition year.

TOM LOVATT (**bronze**), since September 2018, has provided DPS with outstanding service as Field Trip Chair. For several years, he has also served as PSA Creative Image Interclub Competition Coordinator and has been an active member of the Standards Committee.

LARRY HINSON (**silver**) has been a DPS member since

2012. For three years, he served DPS as Projected-Image Director for the monthly and year-end member competitions. In 2019, he served as chair of the Wilmington International Exhibition of Photography.

JON MASSEY (**silver**) has been a DPS member since 2011 and since September 2014 has served the Society ably, competently and faithfully as Treasurer. As a member of the DPS Board of Directors, he has helped shape policies and strategies for the benefit of the Society and its members.

BOB MCCAFFREY (**silver**) has been a member of DPS since 2009. He is a past president of the Society. Far from retiring, he has continued to provide significant and important services to the Society and its members. Bob founded the High School Photo Contest, has been in charge of several local exhibitions, including at the Delaware Museum of Natural History, and has been exceptionally active in the Society's training programs and workshops.

FRED CULLIS (**President's Award**) has been a DPS member since April 2013. Since then, he has served the Society as Judges Chair, Vice President and as a member of the WIEP Team. For the last two years, Fred has served DPS outstandingly as President. He has been an effective and inspiring leader.

Congratulations to all Awardees.

~ TOM TAUBER, Awards Committee Chair



The **Morris James Medal** to ANN SAGEL for winning Projected Image-of-the-Year



The **Morris James Medal** to LARRY HINSON for winning Print-of-the-Year

Some of the Print/Projected Image Standings awardees; Photo Show winners; Honor Ribbon winners; and Service Award recipients.

Images by JERRY AM ENDE



President's Award FRED CULLIS



Commendations



Service Awards



Photo Show Winners



Projected Image Competition



Projected Image-of-the-Year
Honorable Mentions Class B



Projected Image-of-the-Year
Honorable Mentions Class A



Projected Image-of-the-Year
Honorable Mentions Salon



Print Competition Class B



Print Competition Class A



Print Competition Salon



Print-of-the-Year
Honorable Mentions Class B



Print-of-the-Year
Honorable Mentions Class A



Print-of-the-Year
Honorable Mentions Salon

Best of Delaware

PEGGY UDINSKI, who recently joined DPS, was awarded a PSA Honor Ribbon in the 2019 **"Best of Delaware"** competition for her print, *"The Matriarch's Gaze."* Congratulations!



Ward Museum Art in Nature Photo Festival

Each August, **The Ward Museum of Wildfowl Art** holds its **Art in Nature Photo Festival**. The festival includes photo sessions, workshops as well as a photo exhibition. The exhibition contains Professional, Amateur and Youth divisions where competitors submit photos in the following categories: Birds, Plants and animals other than birds, Landscape/scenery, Black & White, Nature macro/micro photos, Smart Device, Humans in Nature and Nature vs Man. More than 900 entries were received from 150 photographers. The printed entries graced the halls of the museum.

The Delaware Photographic Society was well represented in the competition. JERRY AM ENDE won **Grand Champion** as well as **Best in Amateur Division Honors**. PEGGY UDINSKI won **Best in Professional Division**. Other award winners included MITCH ADOLPH, HEATHER REES, PAGE PULLY AND KARL LECK.



The Ward Museum is located in Salisbury, Md. More information can be found at their website:

<https://www.wardmuseum.org>



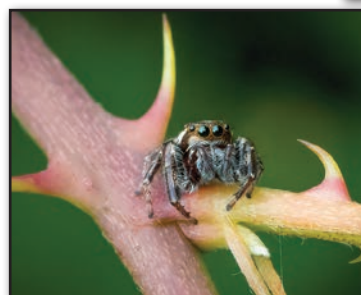
"Gray Ghost With Prey"
by JERRY AM ENDE



"Splash Landing"
by HEATHER REES

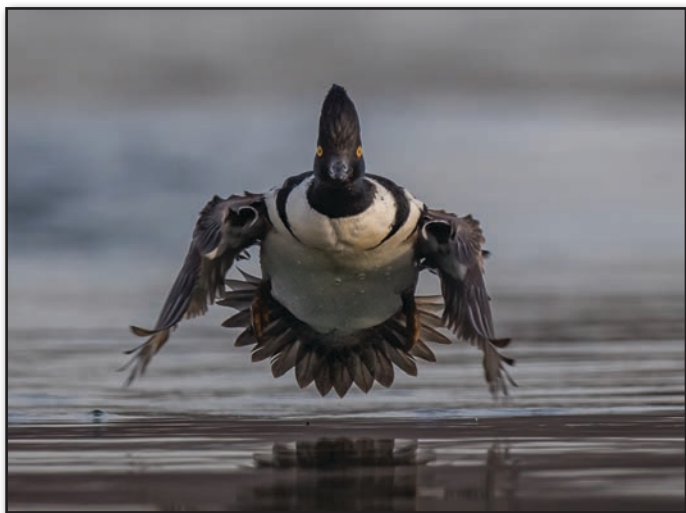


"Dewey Bee"
by HEATHER REES



"I See You"
by HEATHER REES

Ward Museum Art in Nature Photo Festival, *Continued*



"Hooded Merganser Incoming" by PAGE PULLY



"Tree For Breakfast" by KARL LECK



"Snake and Dragonfly" by PEGGY UDINSKI



"Lady Beetle On Wildflower" by HEATHER REES



"Bald Eagle" by MITCH ADOLPH



"Awesome Waterfall" by KARL LECK

PSA Photojournalism Interclub Competition



Let's make this a great year for our club in the PSA Interclub competition for photojournalism!

CALL FOR ENTRIES for your best photos in photojournalism. Please submit up to six images to me at donnakmcfarland@gmail.com.

The file name for your photo should be the name of the image plus your name – e.g. myphoto_dMcFarland.jpg. This will help me identify the images as we go through the competition year. Photo size shall be 1400 x 1050.

Photojournalism consists of pictures or sequences with informative content and emotional impact, including human interest, documentary, and spot news. The journalistic value

of the photograph shall be considered over pictorial quality. In the interest of credibility, photographs which misrepresent the truth, such as manipulation to alter the subject matter, or situations which are set up for the purpose of photography, are unacceptable. The only editing that can be done includes cropping and color correction that could be done in a darkroom.

SUBMIT PHOTOS TO ME BY OCTOBER 31 VIA E-MAIL AT donnakmcfarland@gmail.com

~DONNA MCFARLAND,

Photojournalism Interclub Competition Coordinator

PSA Nature Interclub Competition



I am assuming the role of PSA Nature Interclub Competition Coordinator from the very capable hands of SUSAN PETER, who has done a fabulous job of handling this responsibility for DPS. Many thanks to Susan for her hard work

and dedication, which has resulted in keeping DPS in the top ranks of the Group A competition. Many thanks as well to the talented DPS nature photographers, whose outstanding entries have kept us in the top ranks! I will continue to rely on all of you for your submissions and support!

The final round of competition last spring resulted in DPS placing 5th in Group A, the most competitive class in the Nature Division. SUSAN PETER received an honor award for her image “*Blowing Dust*” taken in Amboseli, Kenya. Congratulations Susan! And congratulations as well to all who entered images and enabled DPS to garner such outstanding results.

PSA is in the process of revising and standardizing the entry requirements for all of their Interclub competitions, which will be distributed later when the specifications are finalized.

The deadline for our first competition of the year will be November 15, so start selecting your best nature images in preparation for the next competition.

~DEE LANGEVIN,

PSA Nature Interclub Competition Coordinator



PSA Photo Travel Interclub Competition 2019-2020



IMAGES FOR ROUND ONE: Deadline OCTOBER 25

Hi everyone. I hope you all had a wonderful Summer and, most importantly, captured some great Photo Travel images! Our new competition year will get underway shortly. There will be three rounds of competition again this year, November 15, 2019, February 15, 2020 and April 15, 2020.

Please note one important change this year: JPEG dimensions; 1400 Wx1050 H; Max file size 1.5MB. Please email up to 3 images to me at: hennesgm@gmail.com no later than October 25, 2019. Images not selected for Round One will be kept in inventory for consideration in future rounds.

Please note the following definition for Photo Travel:

Photo Travel image expresses the characteristic features or culture of a land as they are found naturally. There are

no geographic limitations. Images from events or activities arranged specifically for photography, or of subjects directed or hired for photography are not appropriate. Close up pictures of people or objects must include features that provide information about the environment. Techniques that add, relocate, replace or remove any element of the original image, except by cropping, are not permitted. The only allowable adjustments are removal of dust or digital noise, restoration of the appearance of the original scene, and complete conversion to greyscale monochrome. Other derivations, including infrared, are not permitted. All allowed adjustments must appear natural.

I look forward to seeing your images.

~ MARGARET HENNES,

PSA Travel Interclub Competition Coordinator

PSA Creative Interclub Competition



DPS had a great year competing in the PSA Creative Interclub Competition. We came in 2nd place in Group A for the 2019 season. We scored the highest points in Round 3 back in May. Four out of the six images that were submitted received an award. KARL LECK received an **Award of Merit** for his image, *"Path of a Woman"*. Karl also received an **Honorable Mention** for *"Hungry Truck"*. LARRY HINSON received an **Honorable Mention** in Round 3 for his image *"Pathway to Dreams"*, and MARVIN GERSTEIN received an **Honorable Mention** for his image *"The Next Technology"*.

I have been the DPS Creative Interclub Competition Coordinator for four years now. I have taken on new positions in the club, and I'm going to retire from this position. It's been very enjoyable working with the different creative members

in selecting the 6 images for each round. I've always been amazed by their talent and imagination. During the four years, I have seen some of our members really improve their skills at creative photography. This came about from their dedicated practice, and improving their skills in Photoshop. Creative photography is truly an art. It takes imagination and skill to come up with these artistic images.

KATIE MCHENRY has stepped up to take over as the coordinator of this PSA competition. I will work with her to show her how it's all done. To keep our club competitive in this competition, we need newer members who are drawn to this kind of art to improve their skills at expressing their imaginations. More importantly, do it because you love it. This is an art that can be very rewarding as an artist.

~ TOM LOVATT



"Spirited Wolf" by JOE CAULFIELD



"Path of Women" by KARL LECK



"Pathway to Dreams" by LARRY HINSON



"The Next Technology"
by MARVIN GERSTEIN



"Hungry Truck" by KARL LECK



"Moon Attack" by DEE LANGEVIN

Understanding PSA Interclub Competitions Meeting: September 30, 7:30PM

DPS will meet on September 30 at 7:30pm to inform you of what you need to know about entering PSA Interclub competitions in Nature, Photo Travel, Photojournalism and Creative. Plan to attend this special meeting to learn about the competitions and then start submitting your entries.

Meet Our Member, ANN SAGEL



Born and raised outside of Philadelphia, Ann moved to Los Angeles for 40+ years before moving back to the Philadelphia area. Ann has been shooting a little over 10 years now and Canon has always been her equipment of choice. Her camera of use right now is a full frame 5D Mark III and Canon "L" lenses. Ann is a new member of DPS

in 2018. She joined to meet like-minded people that have a zeal to learn anything and everything photography. She would love to go shooting with new friends and members.

After getting her Irish Setter puppy, Phantom, she found that point and shoot cameras just couldn't keep up with him. So, she purchased her first DSLR camera. The puppy she loved led her straight to her passion in life - photography. "Phantom was my favorite subject, of course, but everything is a wonder to me when viewing it through a lens. Whether I leave it realistic of what was seen at the moment or enhance it to bring out a feeling or emotion to me, Photography is Art. I am always willing to try new techniques like HDR, Texturing, Digital painting or Painting with Light. With every new technique I learn I feel I grow as a photographer. The more I learn the more I love it." Sadly, after 12 years, Phantom left Ann this Spring. Phantom was her love, her life, her muse, her inspiration. She is working hard to gain the momentum she had, when Phantom brightened up her heart.

Ann believes a lot of photographers will only shoot during the Golden Hour, where her philosophy is to "take the shot even if it is midday in full sun." This is where the challenge begins for Ann, using filters like Nik, Topaz and Luminar and Photoshop Creative Cloud it's almost always possible to "create" an impressive photo. Ann is adept at using filters, textures and Photoshop to turn her photography into artwork. She is an expert in color, texture and composition. She can quickly see the good qualities of any photo, as well as, seeing the inadequacies.

Ann has a very large portfolio, which can be admired here: www.visionsbyann.com. As one can see, Ann has mastered many different types of photography and has enhanced each with her unique style and unwavering standards. If it's not a good photo, Ann will make it one. Over the years, Ann has won numerous contests with her artwork, most recently and notably the **Delaware Photographic Society's "Projected Image-of-the-Year"** award. Even with this notoriety, Ann has remained humble and honored, just concerned with the best photo she has ever taken - the next one!



"Windows to the Soul"



"Into Night"



"Rooftop of Rome"



"Painted With Light"



"Glowing Golden Gate"



"Phantom in the Poppies, My Love, My Phantom"



"Ford V8 Emergency"



"One Eye Left"



"Pacer"

► It's Worth a Photo Stop, *Old Car City, Georgia* by KARL LECK

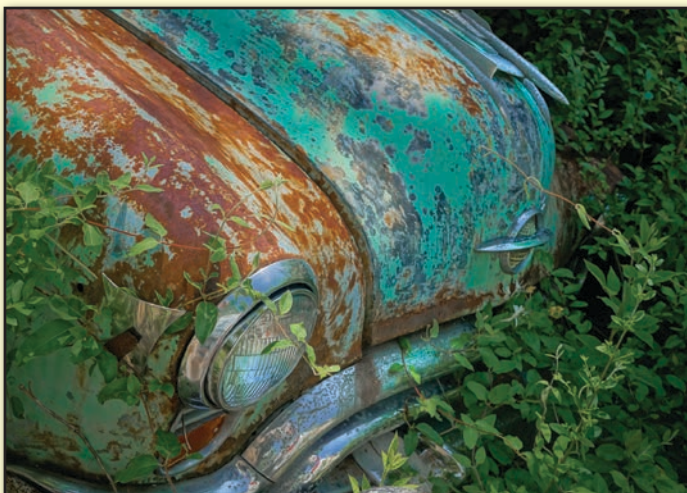
The August 2015 issue of the PSA Journal featured an article about a place called **Old Car City, USA** in White, Georgia. Since we were passing close by on a trip south, Jane and I decided to make a quick stop to see the abandoned old cars.

The 'quick stop' lasted several hours in the June heat and humidity. The 'city' is a wooded 40 acres with miles of trails and very few direction signs. They charge \$15 admission barehanded, but \$25 if you have any kind of camera. I don't usually get lost, but I did here when I noticed that I passed the same cars several times! The

owner, DEAN LEWIS, is a character. His ancestors started the place as a car dealership in 1931. Then it became a junkyard used for parts, but now the thousands of cars weather away in the woods amidst lots of poison ivy. That brings us to the cautions/suggestions part of the story. If you go in warm weather, take plenty of water. Learn what poison ivy looks like, wear pants, socks, and shoes or boots! Wear good footwear because you will walk a lot. Take the usual extra batteries and memory cards. A tripod is helpful particularly if you do multi-exposure high dynamic range photography (HDR). I didn't use a tripod and did OK with Sony's quick in camera HDR tool because there was adequate light for short exposures. The best light would be an overcast day to reduce scene dynamic range. Old Car City's information card has a beautiful photograph taken in snow in overcast light. How often do you see snow in Georgia?

Most of the woods present a fairly tight situation. Wide angle lenses or a 24-70 mm zoom are useful. You might not need anything above 100 mm. I did some interesting images with the Madoka fisheye on a Sony a6500 being careful to keep myself out of the poison ivy and my feet out of the picture.

~continued on page 19



"Oldsmobile Nosedive"

*"Doll Car"*

The PSA Journal photographers did mostly post processed, multi-exposure HDR photography with heavy tone mapping for the 'grunge' effect. I think of this extreme HDR form as a novelty effect that might possibly be artistic as a single image but quickly becomes overdone triviality as a repeated technique. I prefer to use HDR just to add detail in highlights and shadows for a balanced dynamic range without the artifact halos and contrast of tone mapped HDR. I use digital dodging and burning to emphasize important parts of the subject, including the car's headlights or 'eyes'.

*"Dodge Truck"*

Dean Lewis will also direct you to the second floor of the barn where there are rows of shelves full of large Styrofoam cups etched by pen in various patterns and designs. I guess Styrofoam cup art is what you do in a small town when the tourist business is slow.

Even at \$25, photographer friendly Old Car City, USA (oldcarcityusa.com, 770-382-6141) is worth a photo stop to see what Mom Nature can do to man's automotive creations. It's open Wednesday through Saturday, 9 AM to 4 PM.

*"Chrome and Poison Ivy"**"Pine Filling"**"Old Controls"**"Styrofoam Art Cups"*

Can you live with just one camera bag? by RICK MILILLO

For me the answer is a resounding NO! Since purchasing my first DSLR (in 2012), I have accrued quite a collection of camera bags. After returning from a recent trip to Nashville, I went online and purchased yet another type of bag. I added the most recent type after having a frustrating experience using my long-standing 'go-to' large backpack, which normally travels with me on trips. My main bag is a large Mind-Shift brand photography backpack. I like it because there is room for all my photo gear plus a separate section to store non-photo items. I've never felt like I was wishing for more storage with this particular backpack. What I don't like about it is that there isn't a dedicated place for my travel tripod. I end up mounting the tripod to the back using straps. With the depth of the backpack plus the tripod, the pack sticks out over a foot behind me. On a crowded weekend in Nashville, I had many frustrating experiences dealing with the size of this pack.

My newly purchased solution is a mid-sized messenger style bag (Vanguard Discover VEO 38) which has a dedicated bottom compartment that will store the travel size tripod. Having the tripod completely enclosed within the bag is a huge plus! I've used this bag only once so far and the reaction was "why didn't I get this type of bag sooner"?!

The following is a list of my current camera bags and the photo situations I use them for:

1) Large photography backpack: Best for outdoor use with no space limitations. Good when hiking or travelling and not having access to a car or hotel to store or retrieve additional gear. I use this when I need to carry my photo equipment plus additional items like extra clothes, shoes, food, hat, water, sunscreen, etc. Then of course there is the photo gear; primary camera, lenses, a second camera, tripod, battery charger(s), etc. This all fits in the large backpack.

On an 8-mile remote hiking trip in Arizona a few years ago I used the Mindshift backpack and was able to pack everything I needed including a half gallon hydration bag. The model I currently own is the Rotation 180. As much as I like this pack, if I had to choose over again, I would probably pick a different model with a better tripod storage solution. The Rotation 180 also has too many dangling straps which tend to get in the way. I have been eyeing The Mindshift "Moose Peterson" models. Is Christmas coming soon?

2) Small backpack: good for quick trips or short hikes. While hiking on uneven ground, it's important to have any weight you are carrying close to your body for balance. You don't want a shoulder bag swinging around and throwing you off balance while stepping across rocks trying to get that waterfall photo! A small backpack can store a primary DSLR, a second lens or second camera and possibly a tripod (using straps). On the

downside, this size may not have much room for many "extras". The one I use is a traditional backpack with two arm straps, but there are also "sling" style packs designed to go over one shoulder and flip to the front for gear access without having to remove the pack.

3) DSLR bag (aka a holster bag): I use this type of camera case mostly for weddings, or visiting family. When travelling with access to a car or hotel, I'll often take this bag in addition to another larger bag and switch off as needed.

4) Messenger style shoulder bag: IMO these are best suited for places with crowds or when in cities. Places like museums, airports, using elevators, waiting in lines, using mass transportation, or for my infamous tour of a small recording studio in Nashville.

I did some online research and decided on the Vanguard Discover VEO 38 model, which was the only one I found with internal tripod storage. I also like the two dedicated battery compartments; a green one for a fully charged battery and red one for an expired battery.

Most messenger style bags can fit a camera with lens, a second lens, a laptop, a book, a water bottle, plus more. The size seems an ideal compromise of not too small, but not too big. It should also fit at your feet during a flight.

5) Shoulder bag: To be honest I rarely use this bag while travelling. I think it was the second bag I ever purchased, but it currently stays in the closet and is used as overflow storage for things like filters and user manuals. Seems like the other style bags are more functional for taking on photo shoots.

6) A last handy storage item I use when travelling (which isn't technically a camera bag) is a small storage box for camera peripherals. The one I use is a semi-rigid zippered box approx. 10x8x3 inches where I keep cables, battery charger, remote shutter release, and items of that nature. The box came with velcro dividers, but I removed all but one. The biggest advantage of these boxes is colocation of all the miscellaneous stuff that goes along with cameras. Look for one with rigid sides, so it can be put at the bottom of a suitcase or backpack and offer some protection. There are dozens and dozens of these types of boxes out there. They range in price from a few dollars up to about \$30. I saw a company named Bagsmart that seems to specialize in small accessory storage cases.

Plain & simple, the two primary considerations for a camera bag are protection and easy access to your gear. After that, a good camera bag should be comfortable, lightweight, low-key (for security), and sized properly for whatever particular photo venture you are on. That last one varies from day to day, and shoot to shoot, which is why I own several different bags. Lastly,

~continued on page 21



▶ Can you live with just one camera bag? by RICK MILILLO, *continued*

some nice features to have in a camera bag are: ability to stand upright without tipping, a water-proof bottom, a bright interior color, a storage solution for a tripod and an easy to use rain cover.

Some reputable manufacturers to consider for camera bags are: Mindshift, LowePro, Domke, Vanguard, Manfrotto, Ape Case, ThinkTank, Peak Design. However, this is just the tip of

the iceberg when it comes to camera storage products. Even Amazon has their own brand of camera storage bags which are reasonably priced and quite functional. Unfortunately, I have not been endorsed, subsidized or otherwise bribed with free products by the companies.... but I am open and willing if an offer comes along!

▶ Guidelines for Judging Delaware Photographic Society Monthly Print/Projected Image Competitions

These guidelines are provided to acquaint you with the judging procedures for DPS print and projected image competitions, and with some general expectations of our invited judges.

Competitors have been assigned to one of four proficiency classes; Craftsman, Salon, A and B. Craftsman is for those who do their own printing; Salon is for the most experienced; A is for those promoted from B; and B is for the least experienced and/or the newest members. However, you should not automatically assume that images submitted in B are necessarily of less quality than images in A, Salon or Craftsman, but judge each image on its own merits (see below).

We also have different subject categories: ***“Assigned,” “Open” and “Creative.”***

The entries in a given group (i.e. a given class or subject category) will be previewed and judged together, and separately from other groups. The only exception is Creative, where all images entered are judged together, regardless of class. The previews provide the judges with an understanding of the range of image qualities in that particular group.

You will be informed of the evening's Assigned Subject before the meeting, and again at the competition. For the Assigned Subject images, it is the individual judge's responsibility to determine the extent to which each image fits the assignment, and to score accordingly. An appealing image that does not fit the assigned subject very well should not score above a less striking image that fits the assignment. An image that does not fit the assignment at all, no matter how outstanding, should receive a score of a 3 or 4. An image that has a weak relationship with the assignment, should receive no more than 4 points (see also below).

In the Open category, any image can be entered.

In the Creative category, the image may have been altered by Photoshop, trick filters, an unusual set-up or perhaps a viewpoint or lens that substantially distorts reality. An image that looks real (whether or not it has been altered in any way) judges must use their own discretion in scoring.

SCORING

The electronic scoring system we use permits each of the three judges to score an entry from 1 to 9, using a small hand-held push button selector. Thus the total score for each entry can range from 3 to 27. We realize that judging photographic images is largely subjective. **However, we would like you to adhere to the following approximate scoring guidelines:**

1 = Disqualification

3-4 = Not Selected (a poor image or an image not meeting the assigned subject)

5-7 = Good

8-9 = Excellent (Potential Medal/Award)

These guidelines use a “6” as a baseline of a good image: good focus, exposure, composition, lighting, depth of field if appropriate, etc. A “7”, is at the top of the good rating where one of the elements was very good but not enough to elevate it to a score of “8”. A “5”, is at the low end of the good scale where one of the elements listed was inadequate or poor.

A 3-4 rating is used for images where there are two or more flaws and not suitable to be selected in the competition. Additionally this rating would be used for assigned subject evaluation where the entrant does not follow the assignment. No one should receive a 1 for not following the assignment. The scores of a 3 or 4 would speak for themselves. On the other hand, no one should receive an 8 when they did not follow the assignment!

A “1” rating would be used for disqualification ONLY; name on image, an image previously accepted in a prior competition or the same image entered more than once in different categories (assigned, open and creative) the same competition night. (This actually happened!)

An 8-9 rating is used for an image where the judges feel strongly that the image should be accepted, and if awards were given should receive one of these scores. So, an 8 or 9 should be used where all of the elements come together to make an excellent image.

COMMENTS

During judging, if you see an entry on which you would like to offer a comment, call “comment” at the time you score. Audience members may do the same, and all such images will be displayed again after the refreshment break for discussion. After the break the “selected” works will be reviewed by class in ascending order by score, during which time the judges are encouraged to make suggestions on how a particular image might have been improved or offer information on what qualities of the image are especially noteworthy.

INTRODUCTIONS AND HONORARIUM

Before the start of the competition, the DPS Judges Chair will introduce you to the audience by giving a brief summary of your photographic career. To offset your travel expenses, judges who are not members of DPS will receive a check for \$40.00. We hope you enjoy the experience of judging a Delaware Photographic Society competition and we thank you for your participation.

DPS Projected Image Competition Rules 2019-2020

GENERAL

The Delaware Photographic Society (DPS) holds competitions to encourage club members to show and improve their photographic work. Digital Projected Image competitions will be held on the third Monday in September, and the second Monday of October, November, January, February, March and April during the DPS year. The Competition meetings begin at 7:30 PM in the DuPont Pavilion at Cokesbury Village in Hockessin, Delaware. An end-of-the-year competition for Projected-Image-of-the-Year is held in May.

CATEGORIES

The categories for each competition will be: Assigned Subject, Open, and Creative (Altered Reality). All categories, except Creative, will have three classes: Class B, Class A, and Salon. Creative will be treated as a single class.

ELIGIBILITY

The competitions are open to all current active Delaware Photographic Society members whose dues have been paid prior to the competition. Entries must be photographed using a digital camera or scanned by a digital scanner (including scanned photographic slides or negatives). Digital images entered in all categories must be solely the work of the entrant. This includes any image manipulation.

A selected image may not be re-entered. Any image that has been previously **selected** in a DPS Competition whether in print form or as a projected image may not be re-entered in any later competition.

COMPETITION CLASSES

- Class B is for members who are new to competitions or are less proficient in preparing images.
- Class A is for members who are more experienced and more proficient.
- Salon Class is for members who have demonstrated high skill in image making.

CLASS ASSIGNMENT

New Members will be assigned to Class B, unless the new member, prior to the start of their first competition year, requests a higher-class ranking. If such a request is made the requestor's work (e.g., portfolio) shall be reviewed by the Standards Committee. The Standards Committee may then approve the request.

At the end of the year the Standards Committee may advance members to the next higher class based upon their performance in competition, during the previous one to two years, having demonstrated a significant improvement

in photographic proficiency. This can occur until the member is in the Salon Class.

Note: changes to a member's competition classification shall not be made during a competition year.

IMAGE REQUIREMENTS

- JPEG files only (sRGB color space is recommended)
- **Maximum 1200 KB (1.2MB) file size**
- **Maximum dimensions of 1200 pixels for the longest side of the image**

NUMBER OF ENTRIES PER COMPETITION

- Assigned Subject – 1 image
- Open Subject – 1 image
- Creative – 1 image

IMAGE COMMENTS

If comments are requested, they must be requested during the time that an image is projected. Comments may be requested for information from the judges or to request more information about the image from the maker (e.g., location, etc.). Members of the club and judges may request comments for an image.

Each member, whether competing or not, may submit one or two additional images in the competition website for discussion. These images will be anonymously presented individually after the competition for open discussion. The discussion period will be regulated at each meeting by the President and Projected Image Director. If time runs out before all of the discussion images are viewed, the images that were not shown may be presented or entered to a later meeting for discussion. A key purpose of these images is to provide positive feedback to help the member refine the image. The image size requirements will be the same as those images entered in the competition.

ASSIGNED SUBJECTS

A list of Assigned Subjects is published in *"The Reflector"*. Assigned subject competitions are conducted in all classes. **All images that are to be entered in the Assigned Subject category for the 2019-2020 DPS year must have been captured after September 1, 2018. A new entry field indicating "Capture Date" will be on the entry form this year.**

OPEN SUBJECT CATEGORY

Any image taken by the club member, at any time, may be entered in the Open category, with the exception of images previously selected in earlier competitions. Club members are requested to use discretion and propriety when submitting images in this category. The Open category has no date, technique or subject requirement.

DPS Projected Image Competition Rules 2019-2020

CREATIVE

Creative, also known as Altered Reality, is intended to encourage experimental or non- traditional work. The image may be whatever the maker wants it to be. Images must have been manipulated to a form that could not have been captured in the camera. There are no date requirements for creative category.

ENTRY METHOD

All Digital images must be entered through the **Members Website** at least three (3) days prior to the Digital Competition (the deadline is midnight Friday prior to the Monday competition).

SELECTED IMAGES

Images will be considered "selected" if the total score awarded for the image is in the top 25-30% of the scores – ranked high to low.

JUDGING AND SCORING

Each time a new category is introduced to the Judges (e.g., Class B – Assigned, Class A – Open, etc.) there shall be a 2 second review of each of the images for judges. When the review is complete the images shall be redisplayed for the judges to score. Each image will be held on screen until the 3 judges have each entered their score.

When the judges have scored all images of a given category, the next category shall not be introduced until the judges have scored all categories.

After completion of the judging there shall be a break in the meeting for the scores to be tabulated and the cut score determined.

After the break all images for which comments were requested shall be redisplayed for the judges or members comments. Then the selected images shall be redisplayed with the score, the maker's name, and the image title read to the club.

DISQUALIFICATION

Exhibitors are responsible for adhering to the competition rules set forth. The Projected Image Director may disqualify any image that does not conform to the rules of the competition.

Reasons for disqualification include (but are not limited to):

- The Image submitted for Assigned Subject does not meet the Assigned Subject criteria.
- The Image did not originate with the person submitting the images.
- The image is recognized as having been entered and **selected** in a previous competition without regard to the year entered and selected.

- Identification marks, names, titles or honors appear on the image(s).

ANNUAL AWARDS

Cumulative scores will be kept for each member in each category and class. First, Second, and Third place brass plates will be awarded to the top three members in each category and class. In case of a tie the member who entered the most images in that class and category will prevail. Other awards can be awarded at the discretion of the Projected Image Director.

PROJECTED IMAGE-OF-THE-YEAR COMPETITION

A Projected-Image-of-the-Year (PIOY) competition will be held in May. Each competitor may enter all of his or her **selected** images for judging. All entries must have been entered and **selected** during the current competition year in Class B, Class A, Salon and Creative. There is no distinction between Assigned, Open and Creative subjects in the PIOY.

Three qualified judges, who are not members of the Delaware Photographic Society, shall jury the PIOY competition. One image will be chosen as the Projected-Image-of-the-Year and winner of the Morris James award. Up to 10 Honorable Mentions will be awarded in each class with a limit of one HM per entrant.

NOTICE

By virtue of submitting your entry, you permit DPS to reproduce all or part of the entered material free of charge for publication and/or display in media related to the Society.

The Delaware Photographic Society will take all reasonable care to ensure that all submitted images appear before the judges and are entered in the correct Class. However, the Delaware Photographic Society cannot be responsible for any errors or omissions in this regard. Entering the contest signifies your acceptance of this notice.

~ JOHN POWELL,
Projected Image Director



DPS Print Competition Rules 2019-2020

GENERAL

The Delaware Photographic Society (DPS) holds competitions to encourage club members to learn to print, show, and improve their photographic work. Monthly print competitions are held on the fourth Monday of September and third Mondays of October, November, January, February, March and April. Competition meetings begin at 7:30 PM in the DuPont Pavilion at Cokesbury Village in Hockessin, Delaware. A year end competition for Print-of-the-Year is held in May.

CATEGORIES

There are four competition classes: Class B, Class A, Salon and Craftsman. Each class will have two categories: (1) that month's assigned subject, and (2) open, unrestricted subject. Monochrome and color prints compete together in each class/category.

ELIGIBILITY

The competitions are open to all Delaware Photographic Society members whose current dues were paid prior to the competition. Exhibitors must have made the original captures of all parts of the print's image.

A selected image may not be re-entered except in the End-of-Year competition.

Any image that has been previously selected in an intra-club monthly competition, whether in print form or as a projected image, may not be re-entered in DPS monthly competitions. For a selected image to be entered again, the image must have been substantially changed from when it was previously entered and selected, subject to the judgment and discretion of the Print Director or a member of the Standards Committee. If this matter is unclear, consult with the Print Director.

CLASSES

- Class B is for members who are new to print competitions or do not yet have a success record in producing competition prints.
- Class A is for members who have been successful in print competition and recommended for Class A by the Standards Committee.
- Salon Class is for members who have demonstrated high skill in producing successful competition prints and are recommended for Salon Class by the Standards Committee.
- Craftsman Class is for highly skilled photographers who do all the steps themselves from image capture through final print presentation. Craftsman class is voluntary and open to all members. Participation is for the entire club year (September to the following June).

CLASS ASSIGNMENT

Entrants will be assigned to competition classes by the Standards Committee prior to the first competition in September, or thereafter, prior to the first competition that the member enters. Members may petition the Standards Committee for placement in a different class. Members may voluntarily enter Craftsman Class and bypass the Standards Committee, but they must remain in Craftsman Class for that entire club year.

PRINT SIZES

- Class B: Maximum print size of 8-1/2" x 12", maximum mount size of 11" x 14".
- Class A: Maximum print size of 13" x 19", maximum mount size of 16" x 20".
- Salon Class and Craftsman Class: Maximum print size of 16" x 20", maximum mount size of 16" x 20". Failure to comply with the rules can disqualify the print for that month's competition.

Maximum Number of Entries Per Monthly Competition per Member

Assigned subjects – 2 prints.

Open subjects – 2 prints.

PRINT COMMENTS

While a print is in the viewing box for competition, anyone may request 'Comment' which will be done in the Discussion session following the competition. At that time the requestor must be present and ask what they desire to know about the print or if they wish the judges and audience to discuss the print.

Each member, whether competing or not, may bring one or two additional prints to the meeting and place them in the 'Discussion' pile. These prints will be anonymously presented individually after the competition for open discussion. The discussion period will be regulated at each meeting by the President and Print Director. If time runs out before all of the 'Discussion' prints are viewed, the prints that were not shown may be brought to a later meeting for discussion. A key purpose of 'Discussion' is to provide positive feedback to help the member refine the print.

ASSIGNED SUBJECTS

A list of Assigned Subjects is published in the *"The Reflector"*. Assigned Subject competitions are conducted in all classes. All prints that are to be entered in the Assigned Subject contests for the 2019-2020 DPS year must have been captured after September 1, 2018. The date of original image capture must appear on the back of

DPS Print Competition Rules 2019-2020

the print. The judging panel for any monthly competition will have the final determination as to whether or not a print fits the assigned subject. The Open category has no date, technique or subject requirement.

ENTRY FORM AND LABELING

Members are encouraged to use unique, relevant, descriptive titles for their prints, not generic placeholder names. The exhibitor must enter all print titles via the DPS members web site at least three (3) days prior to the Print Competition (i.e. by the preceding Friday midnight). An entry label, available online to be printed by the exhibitor, must include the exhibitor's name, print title, competition date, and class in which it is entered. Assigned Subject prints must also include the date of original image capture. The label must be securely adhered to the upper left hand corner on the reverse side of the print mount. The location of this label determines the print orientation for presentation to the judges which is particularly important for abstract images. No identification marks, names, or titles are to appear on the front of the print.

MOUNTING

Prints should be mounted on an appropriate mounting surface, such as mount boards by Bainbridge, Crescent, Clear Bags, Savage or another vendor of similar smooth material. Cut mats or slip-in mounts are acceptable. Prints must be well secured to the mount to prevent slippage. Since prints are stacked one on top of the other, effort should be made to eliminate any sharp projections, rough surfaces or adhesive substances on the back of the prints. Any transparent cover over the print needs to be secured at all four edges and will not be removed during competition. Framed prints are not allowed. Failure to adhere to the rules can result in disqualification of the print.

SELECTED PRINTS

Prints with scores in the top 25% of each monthly competition (plus tie scores) will be designated as "Selected". Prints so designated are shown to the audience after the judging, and are eligible for Print-of-the-Year competition. Any prints that have been selected may not be reentered in subsequent monthly competitions.

JUDGING AND SCORING

Prints in each category and class will be previewed in the light box by three judges before scoring begins. Prints will receive a score from each judge and will be ranked by the sum of the three judges' scores. Scores for each entry will be recorded and published online in the members website.

DISQUALIFICATION

Exhibitors are responsible for adhering to the competition rules set forth and the Print Director, at his discretion, can disqualify any entries that fail to conform.

ANNUAL AWARDS

Cumulative scores will be kept at the members website for each member in each category and class. First, second and third place brass plates will be awarded to the top three members plus ties in each category and class at the end of the club year. Additional awards can be given at the discretion of the Print Director.

PRINT-OF-THE-YEAR COMPETITION

A Print-of-the-Year (POY) competition will be held in May 2020. Each competitor may enter any or all of their selected prints from the 2019-2020 club year. All entries must have been entered and selected during the current year in Class B, Class A, Salon, or Craftsman. There is no distinction between Assigned and Open subject or monochrome and color prints for the POY.

The POY competition will be juried by three qualified judges who are not DPS members. One print will be chosen as the Print-of-the-Year and winner of the Morris James Award. Up to 10 Honorable Mentions will be awarded to exhibitors in each class with a limit of one HM per member.

IMPORTANT NOTICE

The volunteer print workers conducting the competitions will take all reasonable care in handling the prints to prevent damage. However, neither the workers, nor the Delaware Photographic Society will be responsible for any damage or loss that occurs to a print. Entering the contest signifies your acceptance of this notice.

Questions about the print rules should be addressed to the *Print Director*, Karl Leck, at karleck@verizon.net or 610-388-0298.



Fort Delaware Field Trip

Patricia Bushey



We had a beautiful, sunny day in May for our Fort Delaware field trip. Around a dozen enthusiastic members met at the Delaware City ferry station to take the boat ride over to Pea Patch Island. When we arrived, most of us went off on our own to photograph the fort from the outside and inside. We found a few reenactors dressed in period clothing to photograph while they were working. Some of us found that the structure of the fort offered interesting abstract and patterned photos. We were a little disappointed to find the path that led back to the bird sanctuary was under ankle deep water, so there wasn't much bird photography. When we returned to Delaware City, most of us walked over to Crabby Dick's to have lunch on the deck. All in all, it was a fun day. I think we all got some decent shots, and got a chance to hang out together.

~ TOM LOVATT, *Field Trip Chair*

Bill Guenther



Esther Steffens





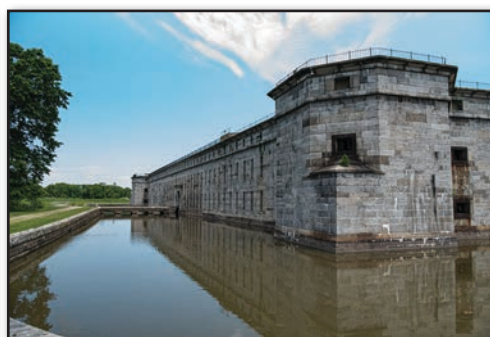
Mark Lieberman



Tom Lovatt



Patrick Little



Jon Massey



GARY ALTOONIAN



JERRY AM ENDE



Marshall Steam Museum and Auburn Heights Field Trips

By GARY ALTOONIAN

Auburn Heights offered two opportunities for photo shoots. On July 8, 15 DPS members received a private tour of the Marshall Steam Museum and captured many great photographs. We learned about the history of the museum and saw many vehicles, most of which are still road worthy. You can visit their website to see what is on display now - <http://auburnheights.org/collections/automobiles/>. Click on the car of your interest and you will see a brief description and history of each automobile.

Some of the automobiles are older than Ray Firmani!

- 1901 [Stanley] Mobile – 2/4 passengers, 4 ½ horsepower, 900 pounds, Cost in 1901 - \$650
- 1932 Packard Phaeton Model 905 – 4 passengers, 160 horsepower, 5,450 pounds, Cost in 1932 - \$4,750

We were told that a one-hour drive, required about 8 to 10 hours off maintenance afterward, and you can see it in the meticulously maintained cars.

We each got a lot for our \$8 entry fee. I may organize another visit there in the Fall. A word of advice, do not wear an orange shirt, unless you want the reflection in your photo.

GARY ALTOONIAN

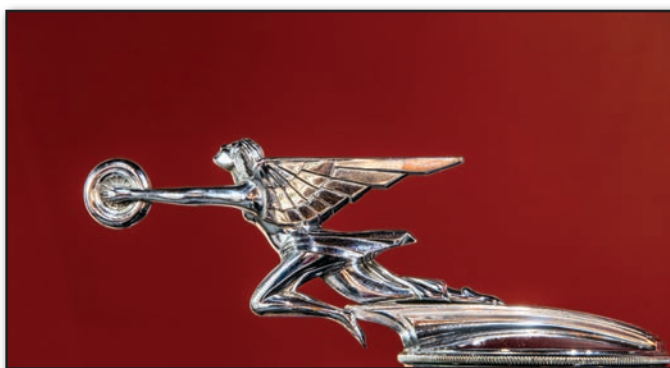
JERRY AM ENDE



ESTHER STEFFENS



NICHOLAS RAFFERTY



JON MASSEY



PETE CURCIO

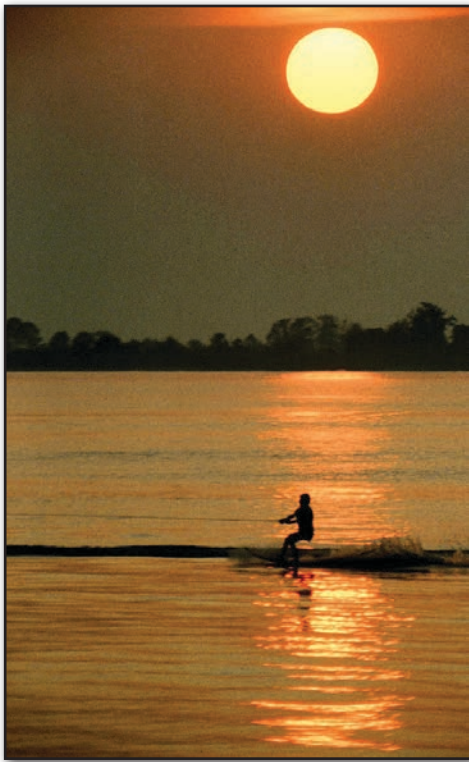


JERRY AM ENDE



On July 9, about a dozen DPS members assembled at Auburn Heights to capture star trails. The stars were there, but, unfortunately, so was the moon... and it was a bit too bright. Jerry was the only one who got some great shots – The Moon and Jupiter and its Moons.

I will schedule another photo shoot during the last week of September. As we get closer to the date, we will pick a date. Stay tuned to the DPS Exchange.



"Last Dance" JEFFRY KOMINS



"Remedy and Toucan Round the Mark" GEORGE REINER

Members Gallery

Summer Activities 2019-2020



"Hazy Hot Beach Days" DONNA HALDAS



"Pig Race" ARNO LESSNER



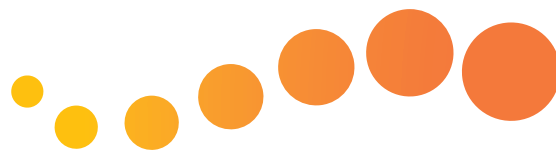
"Pretty Face" LYNN MANISCALCO



"Staying Cool" KAREN PURDY



"Skim Boarding" JOE SIMEONE



"Flying High" MIKE PARRY



"Plein Air Fest" SANDRA MCCARTHY



"Summer Pirates" NICHOLAS RAFFERTY



"Summer Enchantment" KARL LECK



"Skimmer Fun 2" CINDY WILSO-RISKO



"Anyone Like Blueberry Pie" EDWARD GOLDENBERG



"Ice Cream Festival" MARVIN GERSTEIN



"Heat Relief In Paris" TOM TAUBER



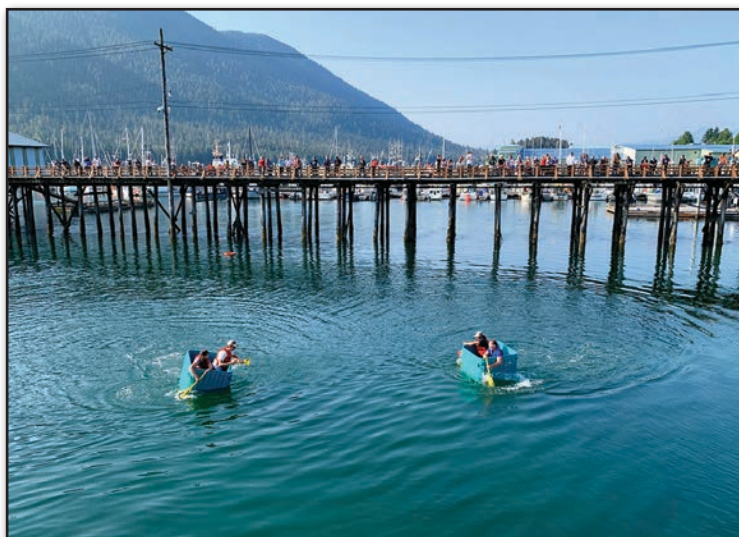
"Fun on the Flats" ESTHER STEFFENS



"Niagara Falls" DOROTHY FOLZ



"Playing With My New Camera" RALPH J. BARON



"July 4th, Petersburg AK" CYNTHIA MCCAFFREY



"Fralinger's The Most Famous Salt Water Taffy" ANN J. SAGEL



"Cape May Fireworks 2" ARTHUR RITCHIE



"Teaching Fishing" THOMAS MAMMEN



"Summer Baseball" BILL GUENTHNER



"Festival Of Joy" MIGUEL MARTIN



"Summer Three Leg Race Fun" MARK LIEBERMAN



"First Time In The Ocean" WILLIAM PULLY



"Wilmington Fireworks" RICK MILILLO



"Carnival Fun" BOB HUNT



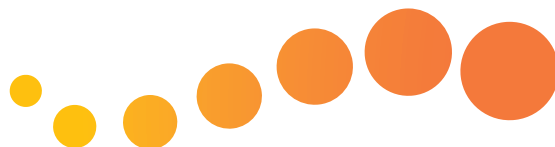
"Longwood Nights" MICHELLE BUTLER



"Shootin' Baskets" JUDITH LESNAW



"Brandywine Zoo" GLORIA FINE



DPS-Exchange

If you're a DPS member and you haven't signed up for DPS-Exchange, I'd ask that you consider joining. The instructions can be found on the DPS Members website or at <https://www.delawarephotographicsociety.org/membership/members/exchange.html>.

Please be sure to let us know who you are when you sign up so that we can verify your membership.

Why should you join? Because using DPS-Exchange gives you access to the knowledge and experience of the members of DPS. It's a member-to-member email forum where you can share experiences, photo opportunities,

or ask questions. Have a technical question about your camera? Want to know where there are sunflowers blooming in the area? Want to know more about taking pictures of sunflowers or other subjects? Want suggestions for where to take photos in Philadelphia? These are an example of topics you'll find on DPS-Exchange.

All we ask is that you keep the conversations cordial and on-topic. It's a great resource to learn from and help other DPS members. Please consider joining if you haven't already.

~ MARK PFEIFER, *DPS-Exchange Moderator*

Welcome back fellow DPS Members!

You've done a tremendous job contributing to the success of *The Reflector*. Continue to send in your articles and photos, so that this year we can continue to present an award-winning publication.

When submitting image files for the newsletter, **please refer to the specifications box**. Articles/images for *The Reflector* October issue are due by September 15, 2019. Articles received after the deadline will be published in the next *Reflector*.

~ THERESA YANICK, *Editor, The Reflector*

Sizing Images for *The Reflector*

Image Mode:	8 bits/channel
Color Profile:	sRGB
File Format:	JPEG (.jpg file extension) (Save at "Maximum" quality.)
Image Resolution:	300 pixels/inch
Longest Dimension:	900 pixels minimum, 1200 pixels maximum (This applies to the longest dimension whether vertical or horizontal.)
File Name:	<i>TitleUsedInCompetition_YourName</i> for winning DPS competition images <i>ImageTitle_YourName</i> for other images



PHOTO OP!

